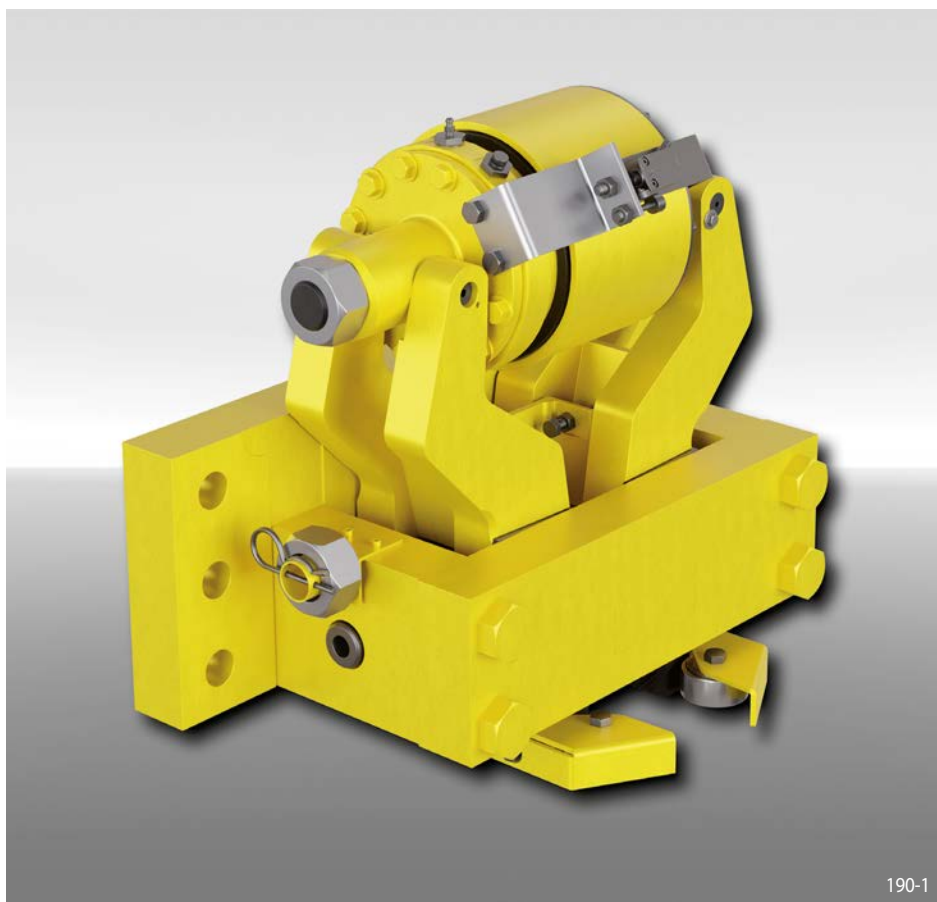


# Rail Clamp DR 088 FHK

spring activated – hydraulically released



Features	Code
Clamp	D
Rail	R
Frame size 088	088
Spring activated	F
Hydraulically released	H
No adjustment to accommodate friction block wear	K
Max. braking force 500 kN	500
Thruster mounted in central position	M
Clamping jaws are available for rail profiles A55, A65, A75, A100, A120 or 60E1	A55 A65 A75 A100 A120 60E1

## Technical Data

Braking force	500 kN
Nominal pad gap (total)	2 mm
Oil pressure	min. 110 bar max. 130 bar
Oil volume	max. 220 cm <sup>3</sup>
Weight	290 kg

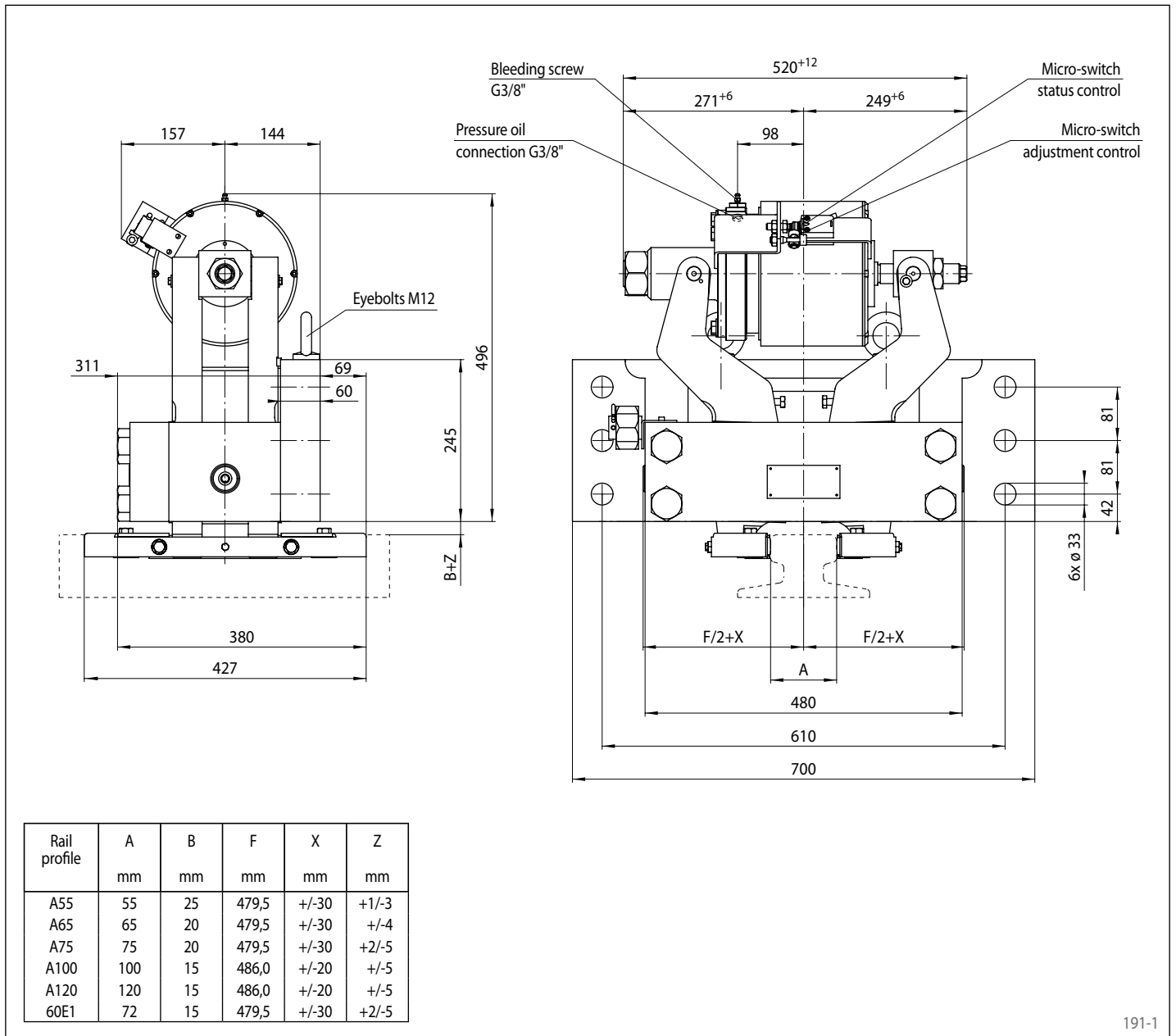
## Example for ordering

Rail Clamp DR 088 FHK, max. braking force 500 kN, thruster mounted in central position and rail profile A55:

DR 088 FHK-500 M-A55

# Rail Clamp DR 088 FHK

spring activated – hydraulically released



191-1

## Working conditions

- Ambient temperature: -20 °C / +40 °C
- Air humidity: <90%

## Monitoring switch

- 240 VAC 1.5 A; 250 VDC 0.1 A
- Cable 5 x 0.75 mm<sup>2</sup>, length 2 m, outer diameter 7.5 mm
- Protection type IP67

## Options

- Protection cover
- Integrated hydraulic power unit
- Offshore certifications
- Seawater execution
- Flat pads for dynamic braking

## Notes

- Fastening:
  - 6 screws M 30 class 10.9 (optional)
  - Cs: 1515 Nm +/- 5% ; μ=0,10